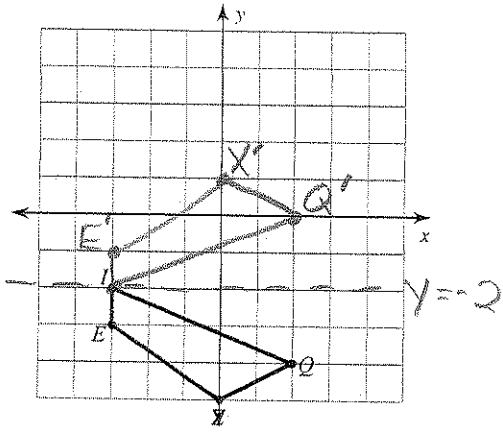


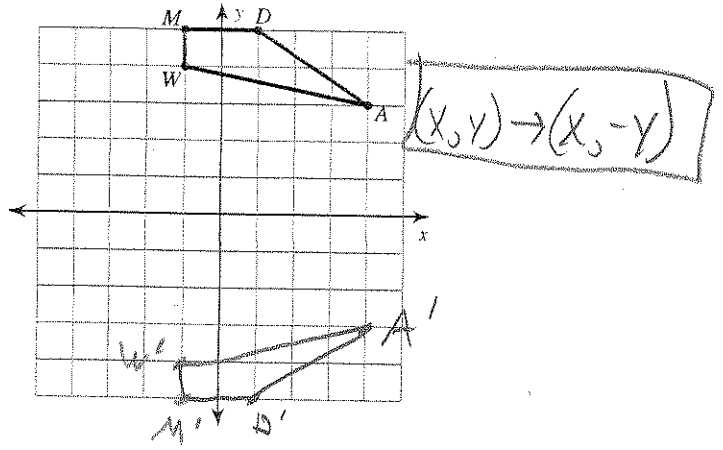
**Reflections**

Write a rule that describes the reflection for questions # 2, 3, 6, 8, 9, 11, 12 only  
 Graph the image of the figure using the transformation given.

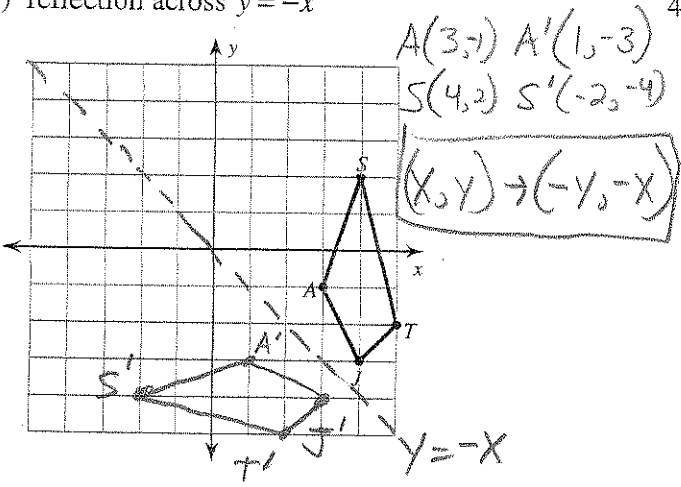
1) reflection across  $y = -2$



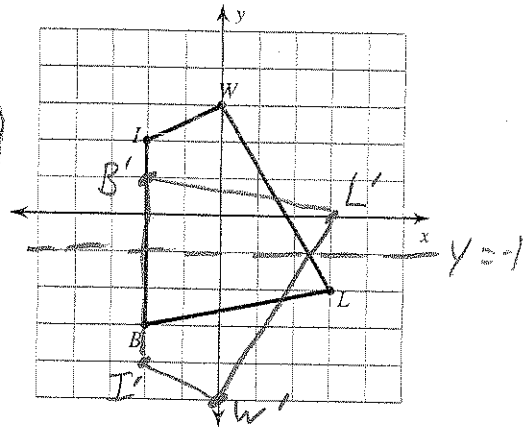
2) reflection across the x-axis



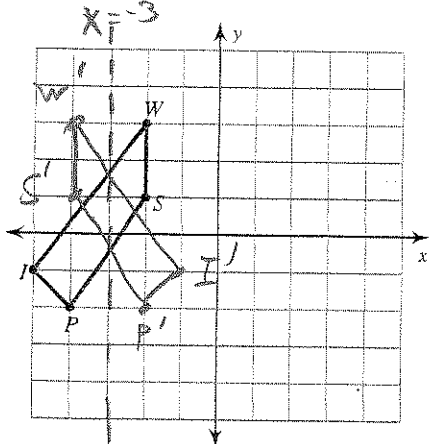
3) reflection across  $y = -x$



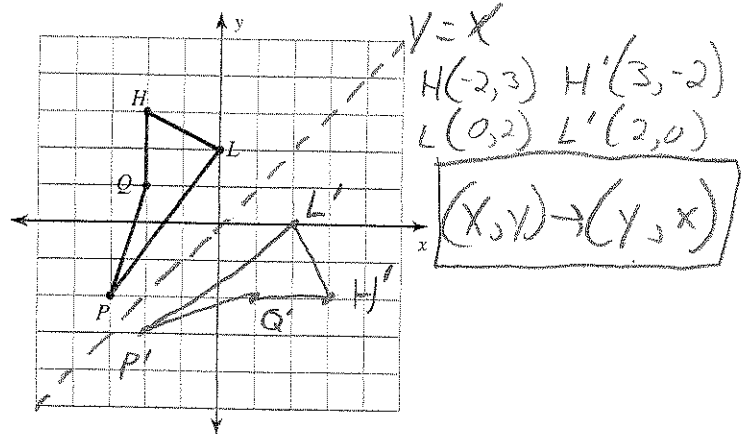
4) reflection across  $y = -1$



5) reflection across  $x = -3$



6) reflection across  $y = x$



Write a rule to describe each transformation.

